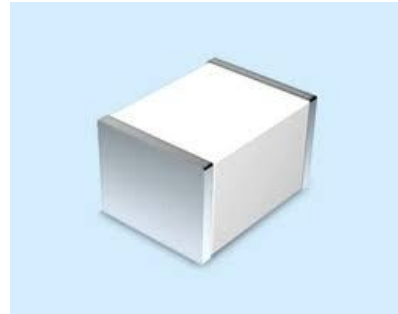


## Gas Discharge Tube - PG23S-M01 Series

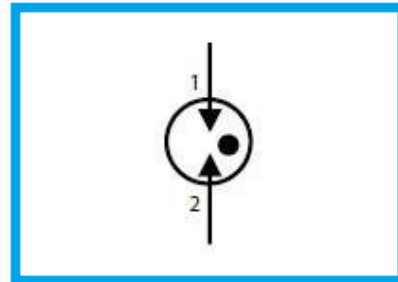
### Features

- DC Spark-over voltage: 75~600V
- Low Capacitance
- Micro-Gap Design
- Stable breakdown voltage
- RoHS & HF compliant
- High holdover voltage
- High insulation resistance
- Large absorbing transient current capability.



### Applications

- Communication equipment
- Test equipment
- Data lines
- CATV equipment
- Power Supplies
- Telecom SLIC protection
- Telecommunications

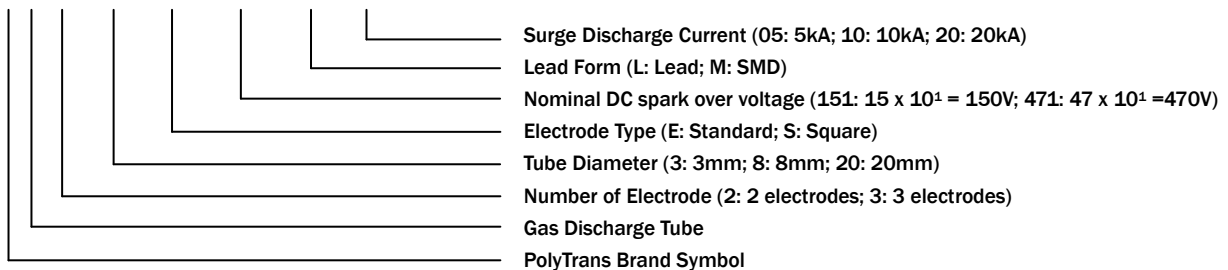


### General Characteristics Definition

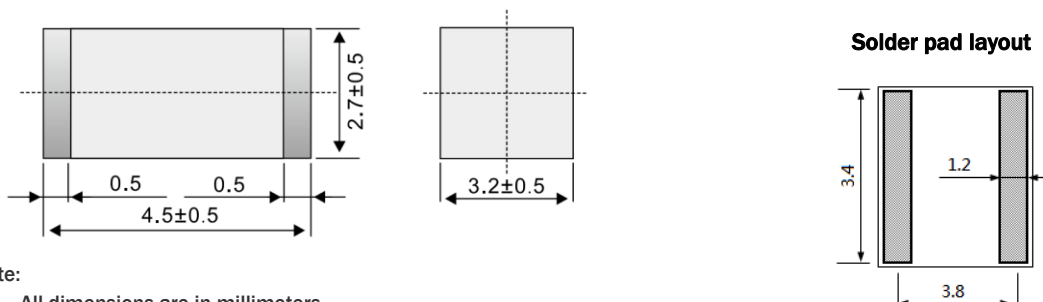
- Operating temperature: -40 ~ 85°C
- Storage temperature: -40 ~ 85°C

### Part Number Code

P G □ □ □ □ □ □ □ □ □ □



### Physical Dimensions



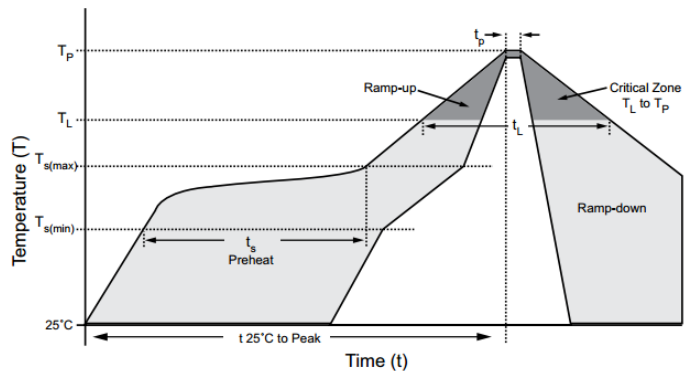
## Gas Discharge Tube - PG23S-M01 Series

### Electrical Characteristics

Part Number	DC Spark-over Voltage @ 100V/S	Impulse Spark-over Voltage @ 1kV/ $\mu$ S	Impulse Discharge Current	Impulse Life Test	Minimum Insulation Resistance Test @ 100 Vdc	Maximum Capacitance @ 1.0 MHz	UL Certification (E474915)
	(V)	(V)	8/20 $\mu$ s 10 Hits (kA)	8/20 $\mu$ s 300 Hits (A)	(G $\Omega$ )	(pF)	
	PG23S075M01	75 $\pm$ 25%	$\leq$ 600	1	100	1	
PG23S091M01	90 $\pm$ 20%	$\leq$ 600	1	100	1	0.6	✓
PG23S151M01	150 $\pm$ 20%	$\leq$ 600	1	100	1	0.6	✓
PG23S201M01	200 $\pm$ 20%	$\leq$ 700	1	100	1	0.6	✓
PG23S231M01	230 $\pm$ 20%	$\leq$ 700	1	100	1	0.6	✓
PG23S301M01	300 $\pm$ 20%	$\leq$ 900	1	100	1	0.6	✓
PG23S351M01	350 $\pm$ 20%	$\leq$ 1000	1	100	1	0.6	✓
PG23S401M01	400 $\pm$ 20%	$\leq$ 1000	1	100	1	0.6	✓
PG23S471M01	470 $\pm$ 20%	$\leq$ 1200	1	100	1	0.6	✓
PG23S601M01	600 $\pm$ 20%	$\leq$ 1400	1	100	1	0.6	✓

### Lead Free Reflow Soldering Recommendations

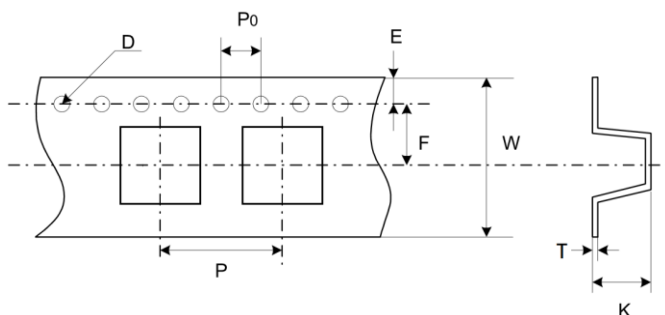
<b>Preheat</b>	
- Temperature Min (T <sub>smin</sub> )	150°C
- Temperature Max (T <sub>smax</sub> )	200°C
- Time (T <sub>smin</sub> to T <sub>smax</sub> )	60-180 seconds
- Average Ramp-Up Rate	1~3°C/second
<b>Peak Temperature</b>	260°C max.
<b>Time within 5°C of actual Peak Temperature (t<sub>p</sub>)</b>	40 seconds max.
<b>Ramp-Down Rate</b>	6 °C /second max.



Note: If the wave soldering temperatures exceed the recommended profile, devices may not meet the performance requirements.

### Packaging Information

Part Number	Quantity	
	EA/Roll	EA/Carton
PG23S-M01 Series	2000	16000



Dimension	Millimeters
P	8.0 $\pm$ 0.1
P <sub>0</sub>	4.0 $\pm$ 0.1
D	1.55 $\pm$ 0.05
E	1.75 $\pm$ 0.1
F	7.5 $\pm$ 0.1
W	16.0 $\pm$ 0.3
T	0.35 $\pm$ 0.05
K	3.5 $\pm$ 0.1